

Bosch Rexroth
Ghana Limited

rexroth
A Bosch Company



**Move Now
Drive Tomorrow
Shape Africa**

**Move Now
Drive Tomorrow
Shape Africa**



Project Capability

Bosch Rexroth Ghana, established in 2016, services the mining, oil & gas and heavy industry markets in Ghana and West Africa.

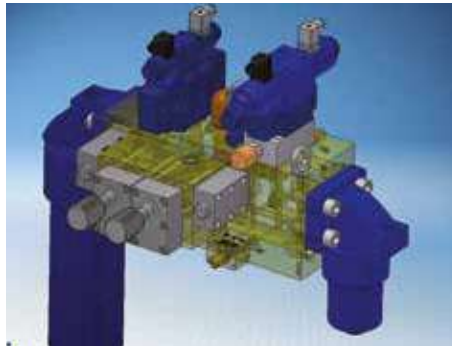
The company operates world-class repair, service, testing, calibration and installation facilities to meet every hydraulic application requirement.



Planning & Design

In Group capabilities to provide the following:

- Detailed studies, costing and design calculations
- Autodesk Inventor (3D CAD)
- Design Reviews
- Detailed manifold design
- Detailed Circuit Diagrams



Manufacture & Assembly

- Systems from 0,5kW to 2000kW and above
- System flow rates from 0,5 to 4000 litres a minute and above



Testing

- Full function and performance testing
- 200kW Test Bench in Ghana for Pumps and Motors
- Full range of test benches for standard, Proportional and Servo Valves in South-Africa



Installation & Commissioning

- Hydraulic pipe-work and systems installation
- Pressure testing and flushing of installed pipe-work up to 4200 litres per minute
- Cold and hot commissioning



Service & Support

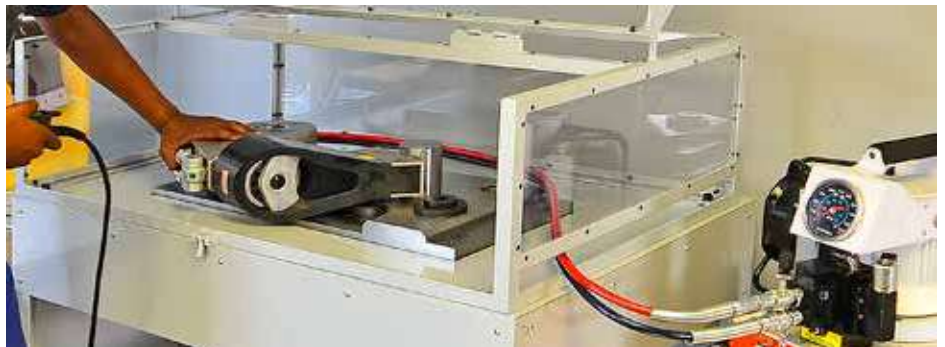
Service

- Fault finding
- System analysis
- Maintenance contracts
- Service contracts
- Fully equipped fleet of service vehicles



Torque Wrench Calibration

- Hydraulic and mechanical Torque Wrenches
 - Calibration
 - Certification



Repair

- Bosch Rexroth Repair Centre of West-Africa
- Genuine Spares
- Full Warranties and exchange program on key components
- Gearboxes in South-Africa
- Torque wrenches
 - Mechanical
 - Hydraulic



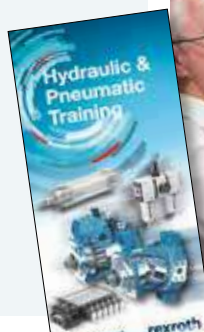
Mine site based Hose & Fittings service

- Bosch Rexroth Ghana can offer onsite workshops
- Non-skive on 1, 2 wire and multispiral hoses
- Full range of fittings
- Full report on failure and change outs at end of the month



Training

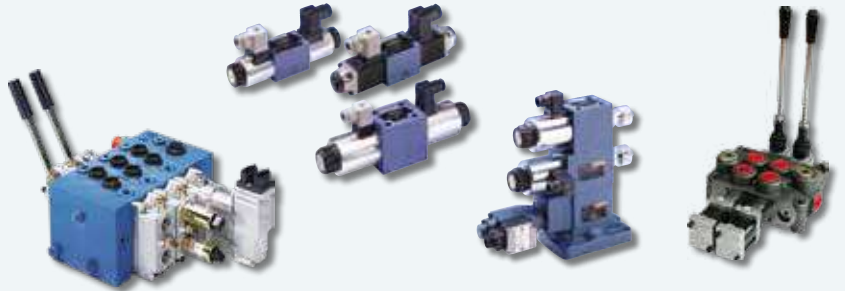
- In-house and field training for employees and customers
- Courses can be developed, specifically aimed at customer or industry needs



Product Range

Control equipment

- Directional control valves 20 – 1100 l/min 350 bar
- Proportional valves 0 – 3000 l/min 350 bar
- Servo valves 0 – 1600 l/min 315 bar
- Logic elements 20 – 25000 l/min 420 bar
- Relief valves 0 – 650 l/min 350 bar
- Pressure reducing valves 10 – 400 l/min 350 bar
- Flow control valves 0 – 360 l/min 350 bar
- Mobile load sensing control valves 0 – 300 l/min 350 bar



Cylinders

- Mill type and industrial cylinders up to Ø600 mm and length up to 9000 mm
- Electro-hydraulic actuators up to 5000 mm stroke length and 80 000 kgf thrust
- Tie-rod cylinders from Ø2" and length up to 1000 mm
- Repair
- ISO 9001



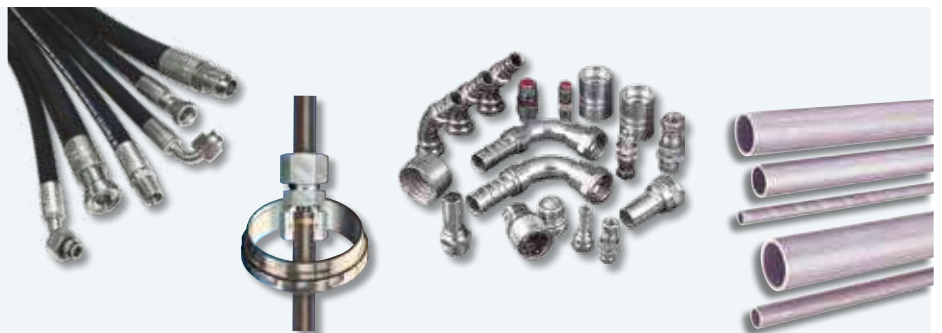
Filtration products

- In-line filters for pressures up to 1000 bar
- Return line filters up to 20000 l/min
- Offline filtration and systems
- Filter elements from 1 µm and above with $\beta(x) \geq 1000$
- Air breathers
- Suction strainers up to 1000 l/min
- Fully equip laboratory for oil analysis to ISO 4406 in South Africa



Tubes, hoses and fittings

- Carbon and stainless steel tubing from Ø6 mm – Ø60 mm
- Carbon and stainless steel tube fittings
- Wire and multi spiral hydraulic hose
- Hose fittings
- Quick couplers



Pumps and Motors

- Axial piston pumps (open & closed loop) 10 – 1000 cm³/rev 450 bar
- Gear pumps 1 – 56 cm³/rev 250 bar
- Motors (bent axis & axial) 5 – 1000 cm³/rev 400 bar
- Radial piston motors (industrial & wheel drive) 160 – 3000 cm³/rev 450 bar
- Haggblunds radial piston motors 1256 – 251323 cm³/rev
- 20 – 4000 Nm/bar torque
- 350 bar max. pressure



Cartridge Valves

- UNF and metric
- Poppet type and spool type directional control valves
- Flow control,
- Pressure control
- Directional control
- Proportional control



Gearboxes

- Planetary 7100 – 3300000 Nm
- Wheel drives 4544 – 400000 Nm



Accessories

- Accumulators
- Level gauges
- Pressure switches and gauges
- Pressure transducers
- Ball valves
- Clamps
- Bell housings
- Flexible shaft couplings



Maintenance Tools & Power Systems

- Hydraulic cylinders & rams
- Hydraulic pumps
- Hydraulic & mechanical pullers
- Hydraulic tools
- Hydraulic jacks
- Stone hydraulic AC & DC power units
- Torque wrenches



Pneumatics

- Standard cylinders
- Standard valves
- Valve terminal systems
- Air preparation & accessories
- Easy-to-combine handling systems



Linear Motion & Assembly Technology

- Ball rail systems
- Precision ball screw assemblies
- Linear bushings
- Linear motion systems
- Basic mechanical elements – profiles
- Robot and handling technology



Electric Drives & Control

- Optifeed
- Indradrive
- Ecodrive & Ecodrive CS
- Controllers



International Companies represented by the Bosch Rexroth Ghana

AVENTICS

rexroth
A Bosch Company

HÄGGLUNDS

HYDAC

asa
asahydraulik.com

Fleetguard

GS-Hydro

HY-PRO
FILTRATION

SPXFLOW
> Bolting Systems > Globe
> Power Team > Stone

SCHMALZ

intertraco

salam

A

M+S HYDRAULIC

GMS

DIIT Group

WALTERSCHEID

MHA ZENTGRAF
FlowControl Technology

KTR

BALDWIN
FILTERS

OMAL
EMPOWERED PERFORMANCE

Italgroup

sesine

LuEn
DIIT Group

dabeb-elram

BÜHLER
TECHNOLOGIES

SETTIMA
research & innovation, always

STAUFF

OLAER

Regional Hubs:

Johannesburg – South Africa (Southern)

Tel: (011) 975 9700

Nairobi – Kenya (Eastern)

Tel: (00254) 20 760 6700

Casablanca – Morocco (Northern)

Tel: (00264) 64 20 3457

Takoradi – Ghana (Western)

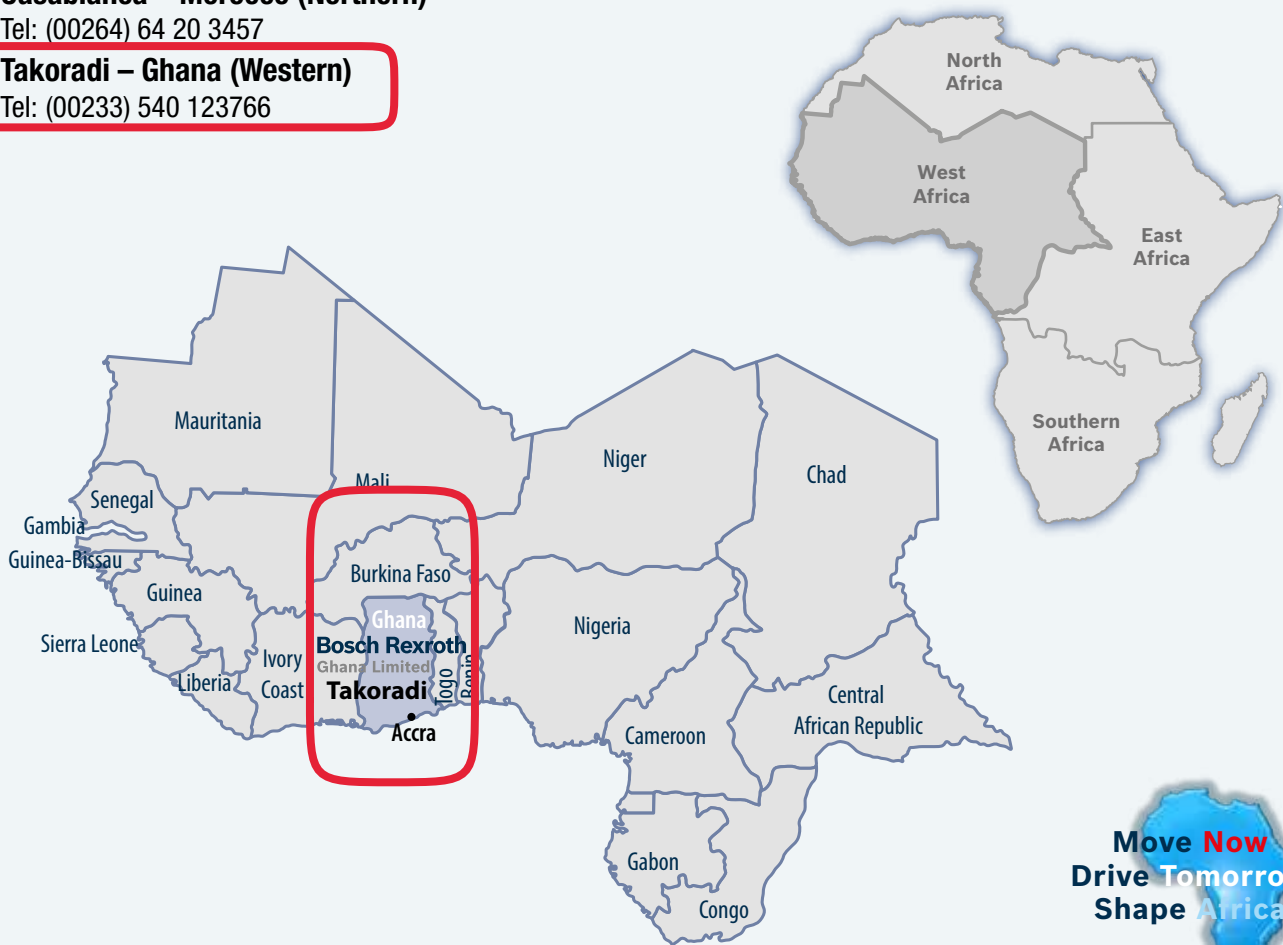
Tel: (00233) 540 123766

Bosch Rexroth Ghana

No.3 Airport Road, Airforce

Takoradi, Ghana

E-mail: westafrica@hytec.com



Move Now
Drive Tomorrow
Shape Africa