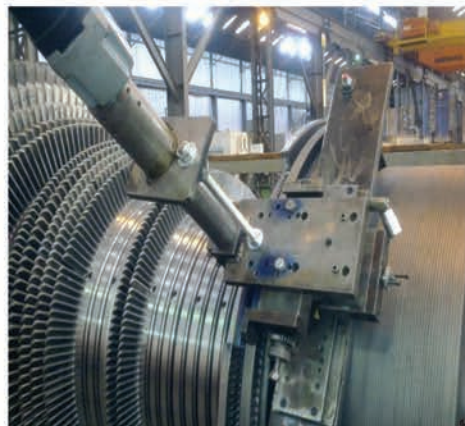
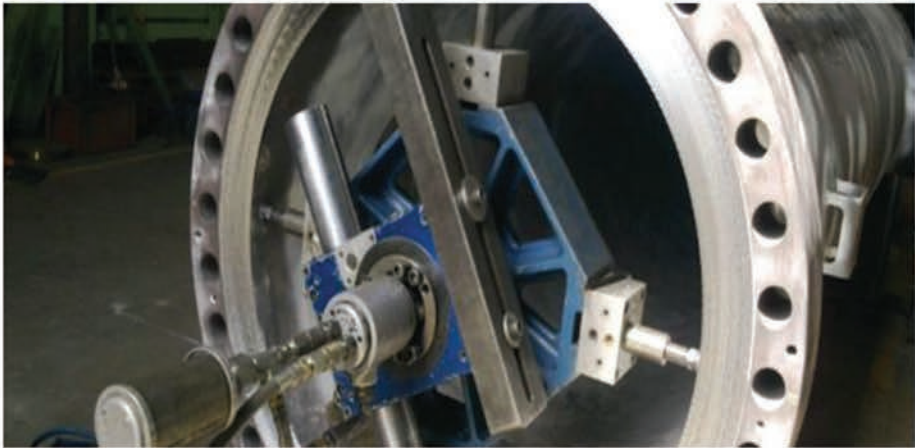




**SAFETY | UPKEEP | LONGEVITY**

**KEEPING YOUR ASSETS OPERATIONAL  
FOR THE MAXIMUM PRODUCTIVITY**



**MCS ECOWAS - ONSITE MACHINE SPECIALISTS**

**MCS ECOWAS LTD**

TAKORADI - GHANA | REG NO: CS113000723

☎ 053 237 0480 / 055 918 1311 ✉ [isaac@mcsecowas.com](mailto:isaac@mcsecowas.com)

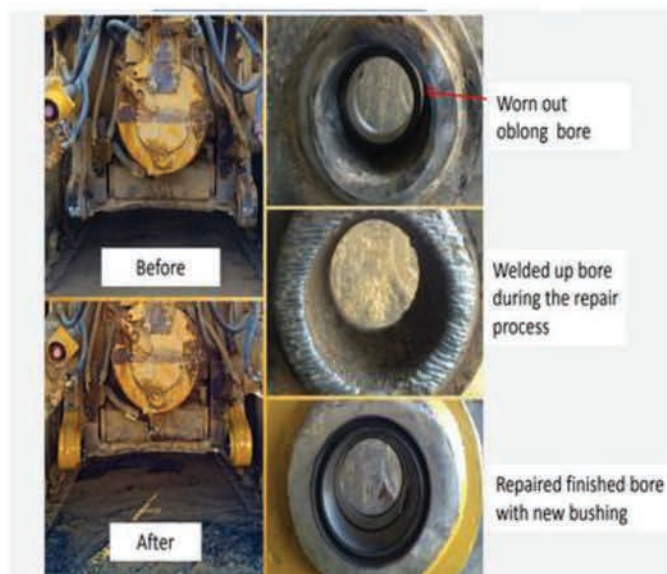
**THINK ONSITE MACHINING - THINK MCS**

**MCS ECOWAS** is Solutions Driven onsite service provider with highly trained technicians and state-of-the-art portable machines for its onsite operations in ECOWAS. The company has over 37 years of experience providing on-site machining, welding, and valve testing system services across various industries in Africa.

We understand proper maintenance and repair of your equipment is crucial to its performance, safety, uptime, and longevity leading to maximum productivity.

### Hence we offer the following:

- Provision of On-Site Machining Solutions - Machine & Technician.
- Rental of On-Site Machines +200 Portable Machines (in Ghana and South Africa).
- Sales of On-Site Machines (exclusive dealership) and Accessories & Consumables.
- Maintenance of on-site machining equipment.
- Manufacturing of specialized parts & components - R&D.
- Welding - Directly & through partners.



### Sectors of Operation:

- Petrochemical
- Mining
- Paper & Sugar milling
- Oil and Gas
- Marine (Ship Repairs)
- Aviation
- Power generation
- Heavy engineering sectors



Bringing the most innovative, highest-quality portable machining, welding & testing tools right to the job, eliminating the need to transport components to workshops.

### Our Services Includes:

- Line-Boring
- Automated Bore-Welding
- Flange Facing
- Milling
- Keyway-Cutting
- Pipe Cutting, pipe beveling
- Drilling of seized studs
- Valve Grinding and Lapping

## LIST OF MACHINES AND APPLICATIONS



MACHINE	APPLICATION	IN-COUNTRY
<b>Line Boring</b> machines support boring diameters from 1.375 to 80 inches (35 to 2030 mm) with precision & speed of stationary machines.	<ul style="list-style-type: none"> <li>• Line boring of heavy construction equipment buckets and articulated joints</li> <li>• Drag line housing repair</li> <li>• Drilling of frozen studs or realignment of slew ring bolt holes</li> <li>• Heavy equipment and crusher gearbox repair.</li> <li>• Line boring of dam wicket gate bushings</li> <li>• Ship stern tube and rudder leaf boring</li> <li>• Re-boring of turbine shell housings</li> <li>• Turbine coupling boring (BB5500 – 50.8 – 106.7mm)</li> </ul>	<b>BB5000</b> Range 38.1 – 609.6mm
<b>Bore Welding</b> Automated welding systems, offer high-quality weld	<b>Valve and pump repair</b> <ul style="list-style-type: none"> <li>• Motor housings and shafts</li> <li>• Bores, pivot points, buckets, and hitches</li> <li>• Shaft OD repair</li> <li>• Rotary crushers</li> <li>• Loader bucket &amp; hitch repair</li> <li>• Gears and gearboxes</li> </ul> <b>Compressors and turbines</b> <ul style="list-style-type: none"> <li>• Nozzles on pressure vessels and heat exchangers</li> <li>• Continuous miners and drag lines</li> <li>• Mud pumps</li> <li>• Rudder Bore</li> <li>• Hydraulic cylinder eye</li> <li>• Presses</li> <li>• Castings and injection molds</li> <li>• Jaw crusher pitman arms</li> </ul>	<b>BW1000</b> Range 22.4 – 609.6mm
<b>Flange Facers</b> Small Internal Dia mount portable flange facers for 0.75 to 19 inch (19.1 to 482.6 mm)	<ul style="list-style-type: none"> <li>• Re-facing of main steam inlet flanges</li> <li>• Heat exchanger nozzle flange repair</li> <li>• Facing and beveling of pipe for sealing and weld prep</li> <li>• Repair of flat face, raised face and phonographic finish flanges</li> <li>• Repair piston rod mating flanges</li> <li>• Boiler feed pump flanges</li> <li>• Re-machining gasket seal on tube sheet</li> <li>• Repairing ring grooves or cutting new grooves</li> <li>• Plate and vessel weld prep</li> </ul>	
<b>Flange Facers</b> , Large ID Mount / Circular Mill flange facers for 5 to 120 inches (127 to 3048 mm), for ID, OD, or Surface Mounting	<ul style="list-style-type: none"> <li>• Re-facing of ship hatch sealing surfaces</li> <li>• Re-machining of rotary crane bearing surfaces</li> <li>• Re-facing of main steam inlet flanges</li> <li>• Re-surfacing of large pump base housings</li> <li>• Re-facing of valve flanges</li> <li>• Heat exchanger repair</li> <li>• Wind tower section flange milling</li> <li>• Ship thruster mount facing, milling and drilling</li> </ul>	<b>FF5000</b> Range facing dia 127 – 609.6mm Milling capabilities  <b>FF6300</b> 299.7 – 1542mm
<b>Flange Facers</b> , OD Mount (25 to 3050 mm) diameters, for OD mounting, and several of our machines can be configured for facing, milling, or both!	<ul style="list-style-type: none"> <li>• Re-facing of ship hatch sealing surfaces</li> <li>• Re-machining of rotary crane bearing surfaces</li> <li>• Re-facing of main steam inlet flanges</li> <li>• Re-surfacing of large pump base housings</li> <li>• Re-facing of valve flanges</li> <li>• Heat exchanger repair.</li> <li>• Re-facing compact flange face angles and RTJ grooves</li> <li>• Wind tower section flange milling</li> <li>• Ship thruster mount facing, milling, and drilling</li> <li>• Pipeline flange re-facing</li> </ul>	<b>FF1000 Flange Facer</b> range from 0 to 12 inches (0 to 304.8 mm)

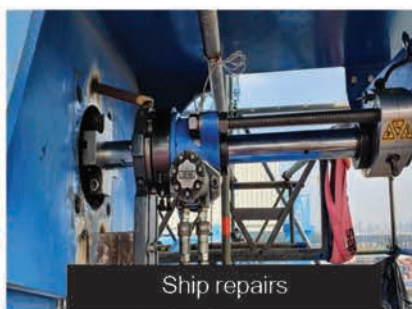
## LIST OF MACHINES AND APPLICATIONS



MACHINE	APPLICATION	IN-COUNTRY
<p><b>Lathes / Drills</b></p>	<p><b>Lathe</b></p> <ul style="list-style-type: none"> <li>Repairing of yoke assemblies on ship rudder control devices</li> <li>Re-machining of rotor journal turbine shafts and fan shafts</li> <li>Re-turning of elevator motor shafts</li> <li>Re-machining of agitator journals</li> <li>Re-machining of gearing., journals on large shafts</li> </ul> <p><b>Drills - Drilling holes in catapult troughs on aircraft carriers</b></p> <ul style="list-style-type: none"> <li>Drilling holes in Titanium</li> <li>Drilling bolt patterns for vertical magnetic plates</li> <li>Ream out holes</li> <li>Stud removal</li> <li>Repair bolt holes and threads on shaft coupling flanges</li> <li>Over-sizing holes on flanges for clearance</li> <li>Repairing bolt holes on bodies and frames, drilling and tapping inside SAG mill</li> </ul>	<p><b>PL2000 Lathe</b> 38.1 to 228.6 mm</p> <p><b>PL4000</b> 203.2 to 609.6 mm</p> <p><b>Promotech magbase 112, 36T</b></p> <p><b>PD3000</b> – morse taper #3 Compact drillfamily</p>
<p><b>Milling Machines</b></p> <p>Our portable three-axis milling machine Choose X-axis travel up to 20, 49, or 78 inches (508.0, 1244.6, or 1981.2 mm).</p> <p><b>Key Mill</b></p>	<ul style="list-style-type: none"> <li>Milling of base plates for mounting pumps and motors</li> <li>Milling of platens of large die casting presses</li> <li>Machining of lock and dam gates</li> <li>Milling of vertical slides on steel rolling mills</li> <li>Shovel, excavator, and dragline. car body, track frame and side rail milling</li> <li>Re-facing of mining truck struts</li> <li>Heat exchanger seal slot milling</li> <li>Milling of keyways in motor shafts</li> <li>Milling of stress relief slots in bridges</li> <li>Milling of radius slots in turbine shafts</li> <li>Machining of pipe ID flats</li> <li>Chipper and conveyer repair</li> <li>Elevator shaft repair</li> </ul>	<p><b>PM4200</b> x-axis – 1244.6mm Y-axis – 203.2mm 304.8mm</p> <p><b>KM3000.</b> Keyway length – 152.4mm shafts with dia. 19.1 to 266.7 mm <b>KM4000</b> Length 203.3mm 101.6 – 609.6mm</p>



Paste Mixer shaft repairs



Ship repairs



GRP Fibre Pipe - "squaring of flange face" - VRA Aboadze



FF5000 Flange Facer



FF5300 Flange Facer



FF6300 Flange Facer



BOP expansion

## PRODUCT AGENCY SALES

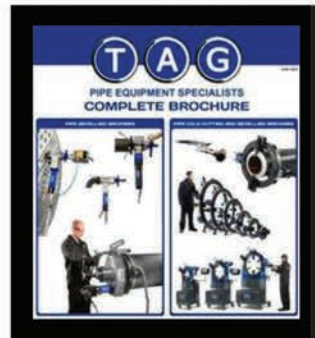


**MCS ECOWAS** has the exclusive distribution rights to the top global brands of on-site machining equipment and engineering products. as well as top-quality magnetic-based drills, cutting consumables, and plumbing tools. These brands are the best in their class for your on-site machining, welding and valve testing and repair needs, bringing the solution to the workpiece for enormous savings in time and money.

Some of the brands include CLIMAX Portable Machine Tools, REMS, Karnasch, Promotech, Broco Rankin, ESCO Tool, and Kraiss.



**CLIMAX**, the industry's leading manufacturer of portable machining, welding, and valve testing systems, is excited to merge with **S.F.E. Group**, based in Houston, Texas. S.F.E offers the world's most comprehensive range of pipe fabrication, orbital welding, and cutting solutions.



The **TAG PIPE** brand portfolio consists of a complete range of portable pipe bevel machines (PREP machines covering 1" - 24"), the TAG PIPE cutting and bevelling splitframe clamshell machines (1" - 120"), as well as the stationary, yet moveable EZ FAB machines (1" - 24") for pipe cutting and bevelling, the EZ pipe saws and finally the PMM plate bevel machines.



**PROMOTECH**  
Welding automation  
Bevelling machines  
Drilling Machines  
Trackless and rail Welding  
Tractors



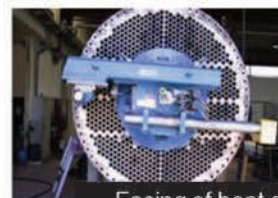
Slew bearing seat area - excavator



Valve seat grinding machine

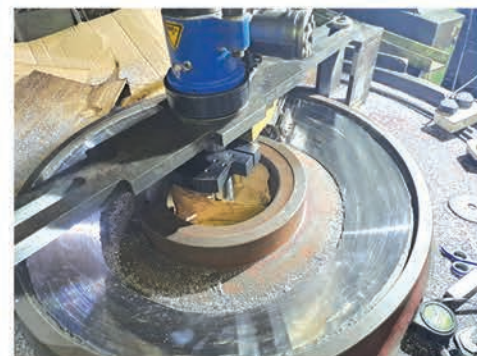


Facing of the Nozzles on Oil facility



Facing of heat exchangers ; tube sheet repairs and replacement





## OUR CLIENTS

